



Nature and Extent of COVID-19 Challenges Among Small, Medium, and Micro Enterprises in Botswana.

Pearson Chaurura^{1*}, Javaid Dar²

¹*Botho University, Faculty of Health & Education, Department of Health Information Management.*

²*Aligarh University, Department of Higher Education, Government of Jammu & Kashmir*

**Corresponding author email: pchaurura75@gmail.com*

Abstract

Small, Medium, and Micro Enterprises (SMMEs) make significant contribution to economic growth in both developed and developing economies. In Botswana, the government has made extensive investment in the SMME sector, but the expected returns are compromised by poor performance and business failure among SMMEs. This problem is amplified during crises as they bring various challenges to the sector. This study used the recent COVID-19 pandemic as a proxy to identify and evaluate the nature and extent of challenges faced by SMMEs in Botswana during crisis times. A mixed methods approach was employed to collect data from 250 SMMEs in Gaborone, Francistown and surrounding areas. SPSS and manual coding and thematic analysis were used to analyse the data. It was found that SMMEs in Botswana encountered several challenges the most important being financial (75.4%), technological (74.4%), and human resource (68.8%) challenges. Specifically, these were drop in sales/business (89.2%), need for accelerated digitisation (45.8%), and capacity to ensure the well-being of employees (58.4%). Additionally, there were challenges with accessing and utilising government programmes despite a high level of awareness among SMMEs. Some challenges showed significant association with SMME industry sectors implying their potential importance in some sectors compared to others. The dominance of financial, technological, and human resource challenges may underscore the central role they play in SMME operations. It is not enough for governments to avail resources, programmes, policies and frameworks in support of SMMEs. More needs to be done to promote their access, uptake, and utilisation.

Keywords: Small, Medium, and Micro Enterprises, challenges, pandemic

1. Introduction

The COVID-19 pandemic, which emerged in late 2019 and rapidly spread across the globe, triggered an unprecedented crisis affecting economies, societies, and businesses worldwide (World Health Organization, 2020). Amid this crisis, Small, Micro and Medium-sized Enterprises (SMMEs) emerged as particularly vulnerable entities, facing numerous challenges that threatened their survival and long-term growth. This effect was felt more acutely in the developing economies due to the negative and unique circumstances that characterise these contexts.

Botswana, a rising Southern African nation, cherishes SMMEs as an indispensable means to success and international acclaim. Consequently, it has invested in the sector in various ways such as the Citizen Entrepreneurial Development Agency (CEDA), Local Enterprise Authority (LEA), and Economic Diversification Drive (EDD). CEDA is mandated to provide financial and technical support to SMMEs in the form of loans and business development services (Citizen Entrepreneurial Development Agency (CEDA), 2023). LEA offers training, mentoring, and advisory services to help SMMEs grow and become sustainable (Local Enterprise Authority (LEA), 2023). The EDD aims to reduce dependence on the mining sector by promoting other industries, particularly SMMEs (Ministry of Investment, Trade and Industry, 2023). The main SMME sectors that make significant contributions to Gross Domestic Product (GDP) in Botswana, according to the World Bank (2019), are mining, tourism, agriculture, and manufacturing. The advent of the COVID-19 pandemic, as everywhere else, disrupted Botswana's economic activities especially those related to the SMME sector. Some of the SMMEs experienced severe setbacks but others displayed greater resilience, thus managing to weather out the pandemic and, in some instances, emerge from the crisis even stronger.

Crises, regardless of nature or type, exhibit similarities in terms of their impacts on economies and the strategies required to mitigate them. These parallels and overlaps, with other crises make the recent COVID-19 pandemic an excellent proxy for the understanding the nature of challenges extent of challenges that SMMEs may face crisis times, and the cross-cutting factors associated with them. Consequently, findings from this study may find application in contexts beyond the place of the primary research. This is crucial in view of the possibility of the continued presence of the COVID-19 pandemic as reported recently in various media outlets (DUCHARME, 2024; Alvarez, Judd, & Blackburn, 2024).

The current study utilised the COVID-19 pandemic as a proxy crisis to comprehensively explore the nature and extent of challenges faced by SMMEs in crisis times regardless of type.

2. Materials and Methods

2.1 Materials

Printed questionnaires, printed mini-interview guide, SPSS software (version 24).

2.2 Methods

2.2.1 Study Design

The study employed a mixed methods approach that allowed for statistical analysis an in-depth exploration of challenges encountered by SMMEs in Botswana during the COVID-19 pandemic (Creswell & Creswell, 2017).

2.2.2 Study Sites

Data was collected from urban and peri-urban areas of Gaborone, and Francistown which are Botswana's economic hub.

2.2.3 Study Population

The research studied formal or registered SMMEs in all economic sectors in Botswana.

2.2.4 Sample Size

The sample size used, calculated using Raosoft online sample size calculator, (Raosoft Inc, 2004), 2004), was 377 SMMEs. These were partitioned between the study sites using a ratio of 1:6 (Francistown: Gaborone) based on estimated distribution of SMMEs in Botswana (Statistics Botswana, 2022). Consequently, the respective sample sizes were 54 SMMEs in Francistown & surroundings and 323 SMMEs in Gaborone & surroundings.

Sectoral representativeness (Krejcie & Morgan, 1970) was based on the top 5 industry sectors (wholesale & retail trade, hotels & restaurants, real estate & renting, education, and manufacturing) using a respective ratio of 6:2:2:1:1 (Statistics Botswana, 2022). This meant the following sample size distribution by study site (Gaborone:Francistown): Wholesale & Retail Trade (162:27), Hotel & Restaurant (54:9), Real Estate & Renting (54:10), Education (27:4), Manufacturing (27:4).

2.2.5 Sampling Approach and Data Collection

Each industry sector was treated as a stratum in which the required number of SMMEs were drawn as per the information above. Convenience sampling was used in-stratum to increase response rate.

A semi-structured questionnaire, containing both close-ended and open-ended questions, was used to collect quantitative data and qualitative data from the selected SMMEs. Usable data was received from 269 of the targeted 377 SMMEs thus resulting in 71.4% response rate, an acceptable level for the purposes of this study. Additional data was obtained from mini-interviews from a select few stakeholders such as officials from relevant government organisations like CEDA, LEA, Statistics Botswana, etc ensuring triangulation of data sources (Rubin & Rubin, 2012).

2.2.6 Data Analysis

SPSS statistical software, version 24, was used to perform the quantitative data analysis, encompassing descriptive statistics, associations, and significance testing. This study utilized mostly Chi-Square test, frequency distribution for quantitative data analysis, and manual thematic analysis for the qualitative data (Agresti, 2007; Field, 2013). Manual coding and thematic analysis were used to analyse qualitative data from the open-ended questions in the questionnaire and mini-interviews (Miles, Huberman, & Saldana, 2014).

3. Results and Discussion

Below are the results of the data analysis, presenting graphs, tables and other visuals based on output from SPSS version 24 and thematic analysis of qualitative data.

3.1 Demographics

3.1.1 Industry sectors

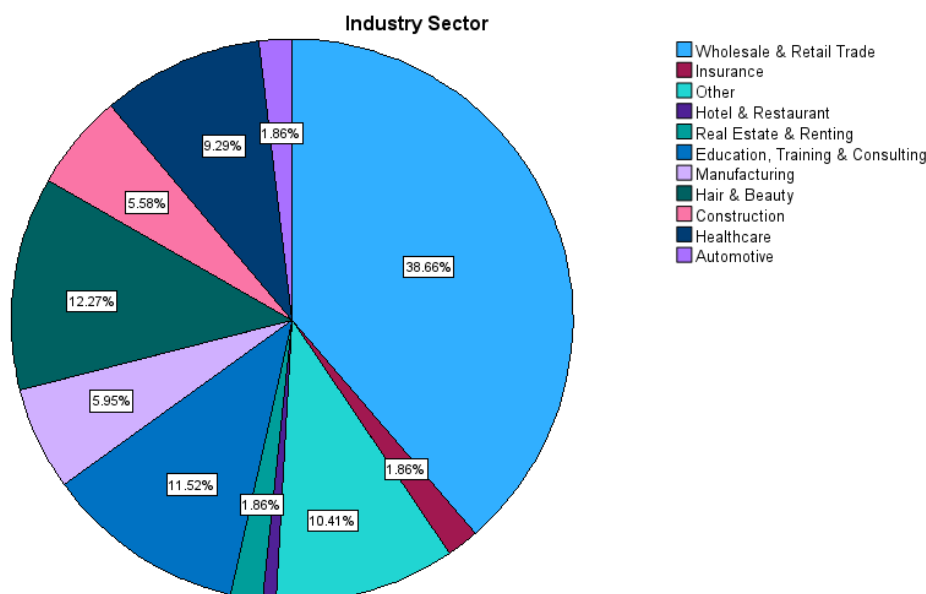


Figure 1. SMME industry sectors that participated in the study

The majority of participating SMMEs, (92.9%) were in the capital city (Gaborone), and surrounding areas, while the remainder (7.1%) were in the second largest city (Francistown), and surrounding areas. Out of the calculated sample size of 377, the study intended to sample 323 SMMEs (86%) from Gaborone and surrounding areas, and 54 (14%) from Francistown and surrounding areas. However, due to below expected response rates in the two locations, the study ended up receiving usable responses from 250 SMMEs from Gaborone and surrounding areas, and 19 from Francistown and surrounding areas resulting in in-location response rates of 77.4% for Gaborone and surrounding areas, and 35.2% for Francistown and an overall response rate of 71.4%. This was a good response rate that permits the deduction of credible findings and recommendations from the collected data.

The biggest SMME industry sector that participated in the study was the Wholesale and Retail Trade sector which accounted for 38.7% of the participants (Fig 1). Other SMME industry sectors with a higher representation were Hotel & Restaurant sector at 12.3%, and the Real Estate & Renting sector at 11.5%. The remaining portion was made up of SMMEs in the Automotive, Healthcare, Construction, Hair & Beauty, Manufacturing, Insurance, Education, and Training & Consulting, sectors. Representations from this portion ranged from 1.9% to 10.4%. This distribution implies that Botswana's SMME sector is dominated by the retail and service economic activities. This is in fact corroborated by the government of Botswana's Ministry of Industry and Trade (MIIT), which asserts that the majority of SMMEs in Botswana operate in the trade and services sectors (Ministry of Investment, Trade and Industry, 2023). It further asserts that the manufacturing and construction sectors are also significant, but represent a smaller proportion compared to trade and services. These findings deviate from those of World Bank (2019) which state that the key SMME industry sectors are mining, tourism, agriculture, and manufacturing. This may be a result of different metrics being used, for instance the World Bank may have been referring to quantum of economic contribution whereas in our study we were referring to absolute numbers and proportion of representation in the sector.

3.1.2 Duration in operation

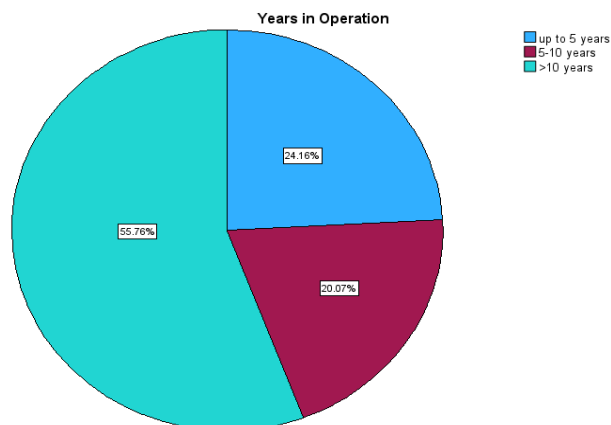


Figure 2. Years in operation for participating SMMEs

The vast majority, 55.8% of participating SMMEs had been in existence and operational for over 10 years (Fig 2). Another 24.2% of the participating SMMEs had been in existence for 5-10 years. Only 20.1% of the SMMEs were between 0-5 years old at the time of participating in this study. MIIT (2023) intimates that 60% of SMMEs in Botswana fail within the first three years of existence due to such challenges as failure to access finance, inadequate skills, and hinderances from the regulatory environment. Consequently, the fact that 55.8% of the SMMEs that participated in this study had been in existence and operational for more that 10 years is a good indication of their tenacity and resilience.

3.1.3 Enterprise size (workforce, annual turnover, and asset value)

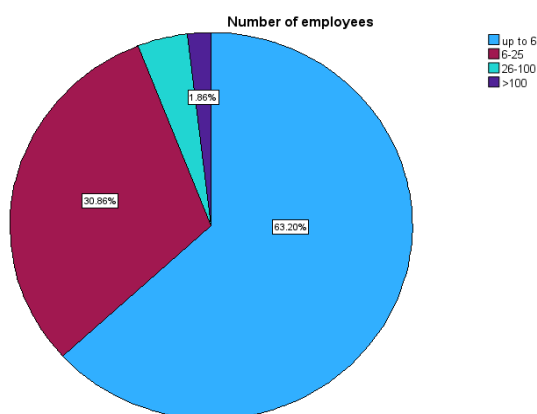


Figure 3. Size of participating SMMEs by number of employees

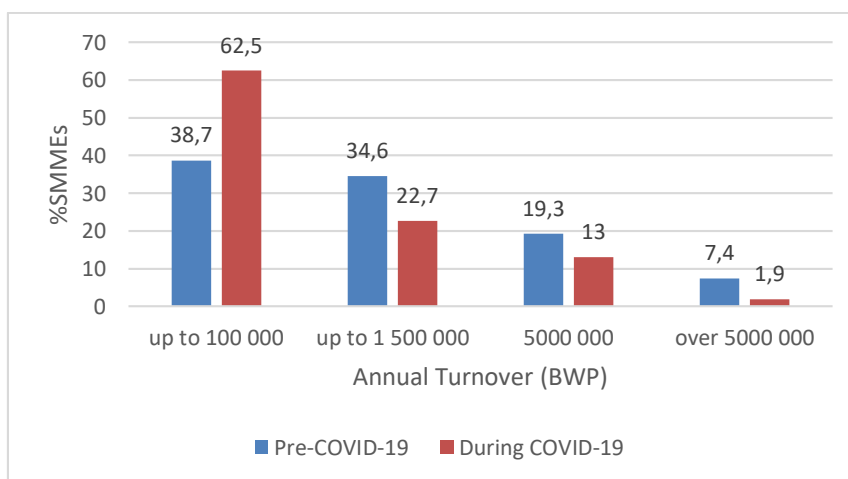


Figure 4. SMME annual turnover pre-COVID-19 and during COVID-19 in Botswana.

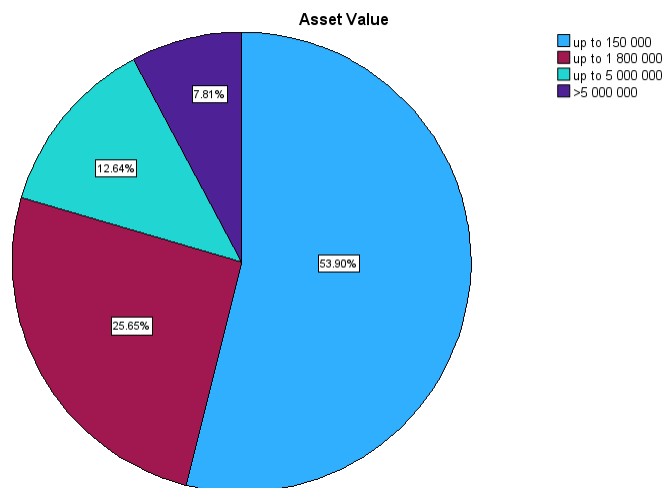


Figure 5. SMME assert value

The bulk of the participating SMMEs (63.2%) had a workforce of up to 6 employees, followed by 6-5 employees (30.9%) (Fig 3) implying that in Botswana, the bulk of SMMEs fall into the micro enterprise category. A tiny proportion had 26-100 employees. This observed distribution is corroborated by MIIT (2023) which asserts that the micro enterprise sector makes up approximately 75% of SMMEs in Botswana. Small enterprises constitute 20% of SMMEs and the balance (5%), is made up of the medium enterprises.

Based on annual turnover, micro enterprises receive less than BWP60 000, small enterprises between BWP60 000 and BWP1 500 000, and medium enterprises up to BWP5 000 000 (Botswana Institute for Development Policy Analysis (BIDPA), 2022; Ministry of Investment, Trade and Industry, 2023). Pre-COVID-19, most SMMEs researched had an annual turnover of up to BWP 100 000 (38.7%), followed closely by those earning up to BWP 1 500 000 (34.6%) (Fig 4). This further supports the view that most of the entities researched fall into the micro- and small enterprise categories.

During COVID-19, the proportion of SMMEs earning the lower bracket of annual turnover (up to BWP100 000) increased to 62.5%, while those earning higher annual turnovers decreased (Fig 4). This does not necessarily imply a downgrading of the SMMEs but indicates that SMMEs in Botswana indeed faced difficulties and challenges because of the COVID-19 pandemic.

The majority of the participating SMMEs (53.9%) had an assert value of BWP 150 000, while a few claimed to have an assert value of over BWP 5000 000 (7.8%) (Fig 5). The higher asset values were not necessarily linked to SMME size as measured by employee numbers or annual turnover. This is because some sectors, for instance health, use high-value assets such as laboratory equipment, thereby leading to a disproportionately high asset value compared to the other measures of enterprise size.

3.1.3 SMME representative participant profiles

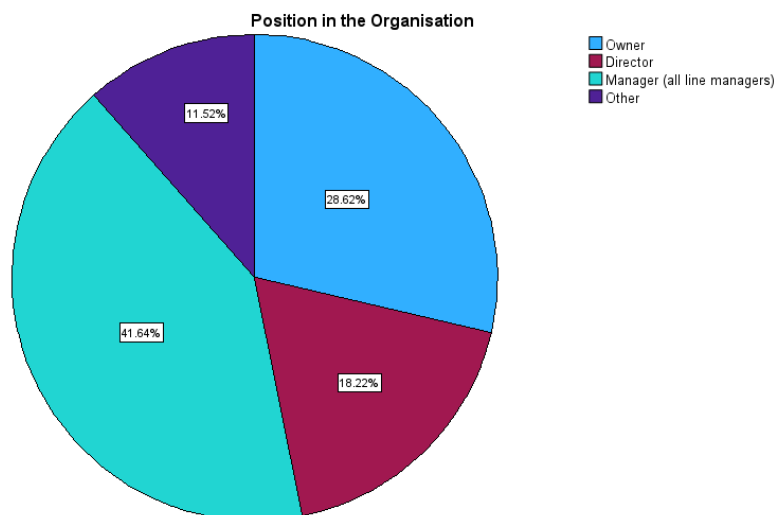


Figure 6. Organisational position of SMME representative in the study

Most of the respondents representing SMMEs were either owners of the SMMEs (28.6%) or Directors (18.2%) making up a cumulative proportion of (46.8%) (Fig 6). The next biggest category of respondents was managerial staff (41.6%), comprising of all kinds of managers regardless of operational function. A small proportion of respondents, categorised as ‘other’, (11.5%), comprised of SMME representatives at any other level in the organisation who were authorised to participate in the study in a representative capacity. This profile of the representative participants for the SMMEs instills confidence that the responses collected during the study provided an accurate account of what transpired in these SMMEs before and during the COVID-19 pandemic.

3.2 Challenges Faced by SMMEs During COVID-19

3.2.1 Overview

Findings from this study indicate that SMMEs in Botswana experienced and were negatively impacted by all the investigated categories of challenges emanating from the COVID-19 pandemic namely financial, operational, market and demand, regulatory and compliance, technological, human resource, strategic, and communication challenges (Fig 7). The proportion of SMMEs agreeing that they were negatively impacted by each of the challenges investigated was more than 50% in all cases. The top three (3) challenges experienced by SMMEs in Botswana were financial (75.4%), technological (74.4%), and human resource (68.8%).

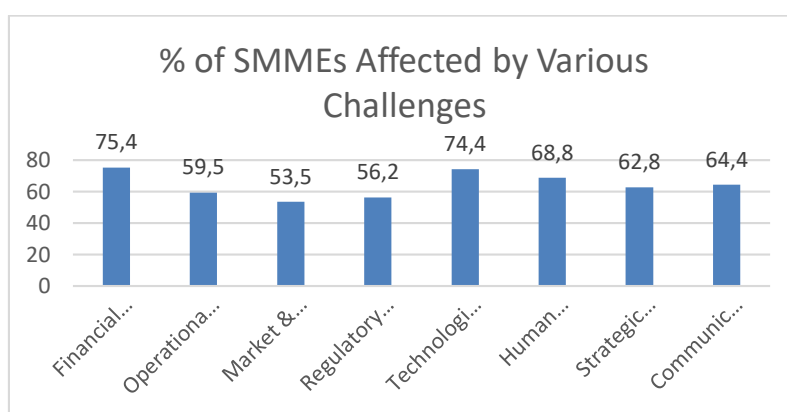


Figure 7. Challenges faced by SMMEs during the COVID-19 pandemic

This roughly agrees with reports from key Botswana government agencies which assert that SMMEs in Botswana continue to face challenges in the form of limited access to finance (Citizen Entrepreneurial Development Agency (CEDA)., 2023), skills and training (Local Enterprise Authority (LEA)., 2023), regulatory environment (Ministry of Investment, Trade and Industry, 2023), and market access (Botswana Institute for Development Policy Analysis (BIDPA), 2022).

This study established, based on Pearson Chi-square tests, a statistically significant association between the challenges encountered and the SMME industry sectors (Tables 1a-c).

3.2.2 Financial challenges

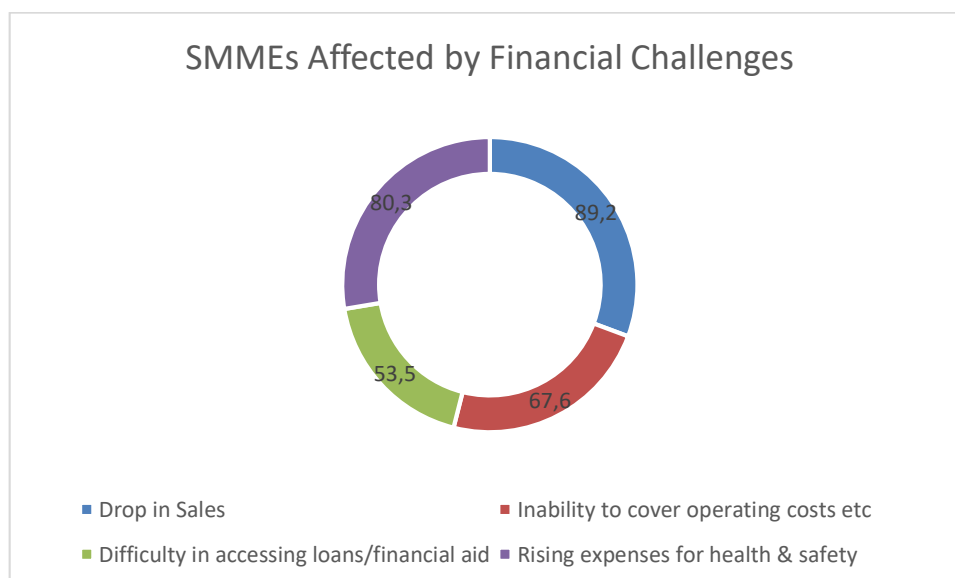


Figure 8. Financial challenges faced by SMMEs in Botswana during the COVID-19 pandemic.

Under this category, the study investigated significant drop in sales/business, inability to cover operating costs, difficulty in securing loans or financial aid, and rising expenses for implementing health and safety measures. The top three sub-categories found to most affect SMMEs in Botswana were significant drop in sales/business (89.2%), rising expenses for implementing health & safety requirements (80.3%), and an inability to cover operating costs (67.6%) (Fig 8). These findings are quite logical in the context the COVID-19 pandemic. Sales or business in general was bound to drop since the pandemic-imposed limitations on the usual way of transacting forced a shift to other less familiar and, maybe, less efficient, at least initially, means of transacting such as e-platforms and other online technologies. Additionally, there were several full lockdowns during the pandemic which meant that business transactions either slowed down or ceased completely at such times.

Rising expenses for implementing health and safety requirements were inevitable as businesses were required to acquire and or put in place equipment, measures, and procedures to alleviate the transmission of the COVID-19 virus. Businesses were expected to acquire measurement and monitoring equipment for instance special non-contact thermometers and stationery for recording temperatures to help detect potentially infected individuals. Unscrupulous suppliers of these gargets charged exorbitant prices which placed a significant strain on most SMMEs' meagre resources especially when coupled to the acquisition of fast-moving consumables like sanitisers and dispensers. Businesses were required to avail on-site isolation spaces for holding suspected cases of COVID-19 before they were handed over to the authorities from the Ministry of Health.

Social distancing requirements meant that businesses had to increase their floor areas and or hire more employees to maintain their levels of production or service. The overall impact of these health and safety requirements was an increase in the associated costs thereby negatively impacting the already strained resources of the SMMEs, most of whom are micro enterprises barely making BWP60 000 annual turnover as discussed previously.

In addition, SMMEs in Botswana also struggled with operating costs related to financing core business activities. This was aggravated by the rising costs in other areas of the business as discussed above which gobbled up money that would otherwise be used in the running costs of the business.

These findings agree with existing literature from other studies (Hossain, Akhter, & Sultana, 2022; Pongtanalert & Assarut, 2022)

Table 1. Chi-Square Tests: Correlation Between Industry Sector & Financial Challenges

Financial Challenge	Pearson Chi-Square-Asymptotic Significance (2-sided)	Interpretation
Drop in sales/business	<.001	Statistically significant
Inability to cover operating costs	<.001	Statistically significant
Difficulty in accessing loans or financial aid	<.001	Statistically significant
Rising expenses for health and safety	<.001	Statistically significant

A statistically significant correlation was established between industry sector and all the sub-categories of financial challenges investigated in this study (Table 1).

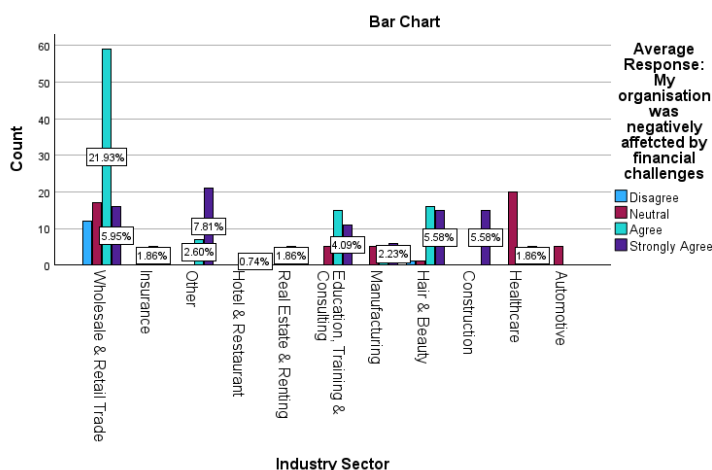


Figure 9. Sectoral association with financial challenges

The sectors reporting significant negative impact from financial challenges were, in descending order: the Wholesale & Retail Trade; Education, Training & Consulting; Hair & Beauty; Construction, sectors. The trend may be reflective of the proportional sectoral representation but may also reflect prejudices of government priority categorisation of SMMEs. Various factors may be responsible for challenges faced by the SMMEs in accessing finance to fund their operations. This issue may require re-looking by government in the interest of fairer treatment of SMMEs to enhance their continued contribution to national economic growth.

3.2.3 Technological challenges

The technological challenges investigated included the accelerated need for digitisation, increased vulnerability to cyberattacks, and inadequate technological infrastructure to support new digital and remote operations. The most prominent technological challenges affecting SMMEs in Botswana during the COVID-19 pandemic were the need for accelerated digitisation (45.8%), inadequate technological infrastructure (35%), and lastly, vulnerability to cyberattacks (25.3%) (Fig 10).

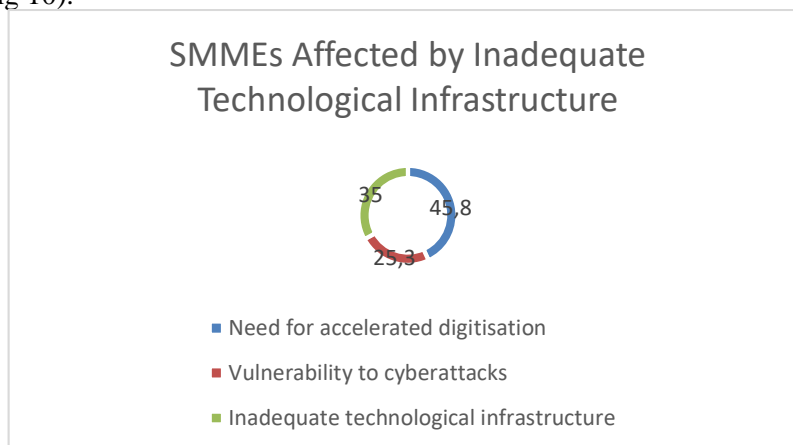


Figure 10. Technological challenges faced by SMMEs in Botswana during the COVID-19 pandemic

The operating environment prevailing during the COVID-19 pandemic demanded increased adoption and use of existing and emerging technologies including. These included, but were not limited to, technologies that support remote operations, or increased automation of processes. Sectors such as education, training and consulting, for instance, could benefit from virtual platforms for meetings and delivery of teaching and learning. Others such as the wholesale and retail trade sector could benefit from e-commerce platforms for marketing and selling their products. Findings, however, indicate that many SMMEs faced challenges with the required pace of digitisation. This was linked to the difficulties in rapidly acquiring, setting up, and utilising appropriate technological infrastructure. In other instances, even if an SMME managed to digitise, they were sometimes ill-equipped to deal with the threats of cybercrime, notably viruses and fraud, given the sophistication of modern-day cybercriminals.

These findings agree with existing literature which states that deficiencies in capacity to adopt, adapt, and utilise digital technologies were an important challenge impacting SMME viability during COVID-19. Capacity deficiencies in this regard are thought to have emanated from a lack of experience with crisis management in comparison to larger enterprises (Herbane, 2019), or a potential lack of internal research and development capability technologies for digitalization (Guo, Yang, Huang, & Guo, 2020) leading to a reliance on external technologies which may be poorly understood or adapted to context. Consequently, some SMMEs were not digitally prepared to face the challenges inherent in transitioning to online operations, implementing remote work arrangements, and leveraging digital tools for communication, collaboration, and customer engagement (Pongtanalert & Assarut, 2022).

Correlation tests using the Pearson Chi-Square test indicated that there is a statistically significant correlation between industry sector and all the sub-categories of technological challenges investigated in this study (Table 2).

Table 2. Chi-Square Tests: Correlation Between Industry Sector & Technological Challenges

Financial Challenge	Pearson Chi-Square-Asymptotic Significance (2-sided)	Interpretation
Need for accelerated digitisation	<.001	Statistically significant
Vulnerability to cyberattacks	<.001	Statistically significant
Difficulty in accessing loans or financial aid	<.001	Statistically significant
Inadequate technological infrastructure	<.001	Statistically significant

The sectors reporting significant negative impact from financial challenges were, in descending order: the Wholesale & Retail Trade; Education, Training & Consulting; Manufacturing, Healthcare Hair & Beauty; Construction, and Automotive sectors (Figure 10c).

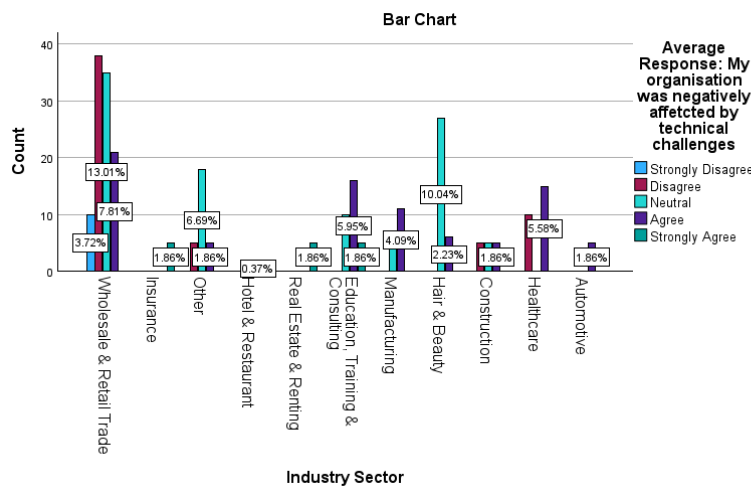


Figure 11. Sectoral association with technological challenges

The trend may be reflective of the proportional sectoral representation but may also emanate from the differential treatment of SMMEs resulting in some SMMEs failing to acquire critical technologies needed in their industry sectors. This may be particularly true for the healthcare and manufacturing sectors where up to date equipment and machinery may seriously impact capacity.

3.2.4 Human resource challenges

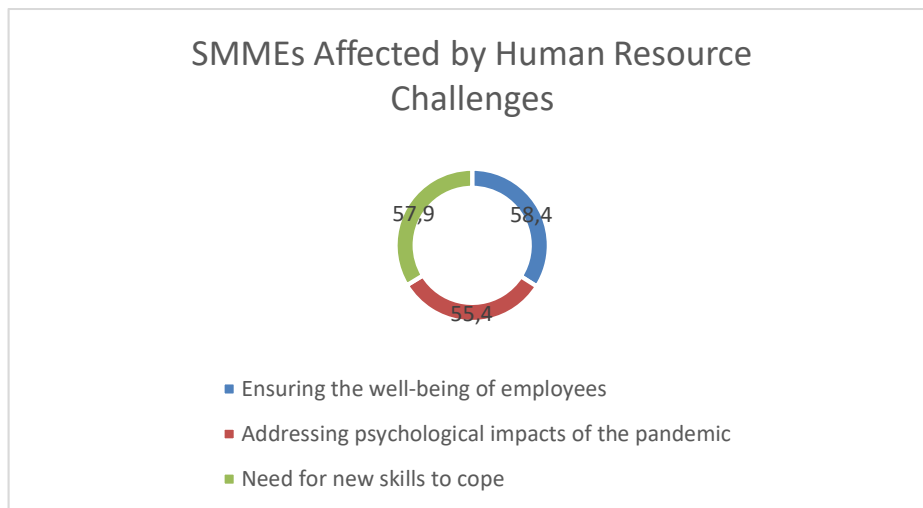


Figure 12. Human resource challenges faced by SMMEs in Botswana during the COVID-19 pandemic

In this category, the research investigated issues with ensuring the well-being of employees, addressing the psychological impact of the pandemic on employees, and the need for new skills to adapt to changing business models and technologies. Findings identified issues to do with ensuring the well-being of employees to be the most prominent (58.4%) among SMMEs in Botswana during the COVID-19 pandemic. This was followed by the need for new skills to cope with the pandemic (57.9%), and lastly addressing the psychological impacts of the pandemic on employees (55.4%) (Fig 12).

Employee well-being refers to a state of balance in the different aspects that affect employees including, but not limited to, physical health, provisions, and social aspects. If employee well-being is compromised, it will be reflected in their compromised productivity as they will not be able to focus well on their job responsibilities. The fact that a high proportion of the respondents pointed out that their organisations faced challenges with ensuring the well-being of employees implies that business operations may have been negatively impacted.

The need for adopting and using emerging technologies in mitigating the negative impacts of the pandemic, as discussed under technological challenges, directly demands the development of associated skills in the workforce. LEA (2023) pointed out that there is a notable skills gap among SMMEs owners and employees in Botswana and that training and capacity building programs are essential to enhance business management and technical skills. The fact that a significant proportion of SMMEs reported challenges in addressing the need for new skills in the workforce implies that business operations such as using online platforms for conducting meetings, or delivering teaching and learning, in the case of the education, training and consulting sector, may have been negatively impacted leading to reduced efficiency and effectiveness.

Difficulties in addressing the psychological impact of the pandemic on employees and maintaining morale could lead to compromised productivity in employees. In extreme cases, psychological issues can lead to social problems such as depression and suicide and suicidal tendencies.

Thematic analysis yielded additional human resource challenges under the theme ‘workforce challenges. Some respondents in the construction sector reported that their organisation’s employees left for more stable jobs as the industry faced project shortages. This has the effect of causing a brain drain for the sector.

Table 3. Chi-Square Tests: Correlation Between Industry Sector & Human Resource Challenges

Financial Challenge	Pearson Chi-Square-Asymptotic Significance (2-sided)	Interpretation
Ensuring the well-being of employees	<.001	Statistically significant
Addressing the psychological impact of the pandemic on employees and maintaining morale	<.001	Statistically significant
Need for new skills to adapt to changing business models and technologies	<.001	Statistically significant

The Pearson Chi-Square test indicate that there is a statistically significant correlation between industry sector and all the sub-categories of human resource challenges investigated in this study. This correlation can be seen in figure 13 below.

The sectors reporting significant negative impact from human resources challenges were, in descending order: the Wholesale & Retail Trade; Education, Training & Consulting; Hair & Beauty; Construction, and Automotive sectors. The trend may be reflective of the proportional sectoral representation.

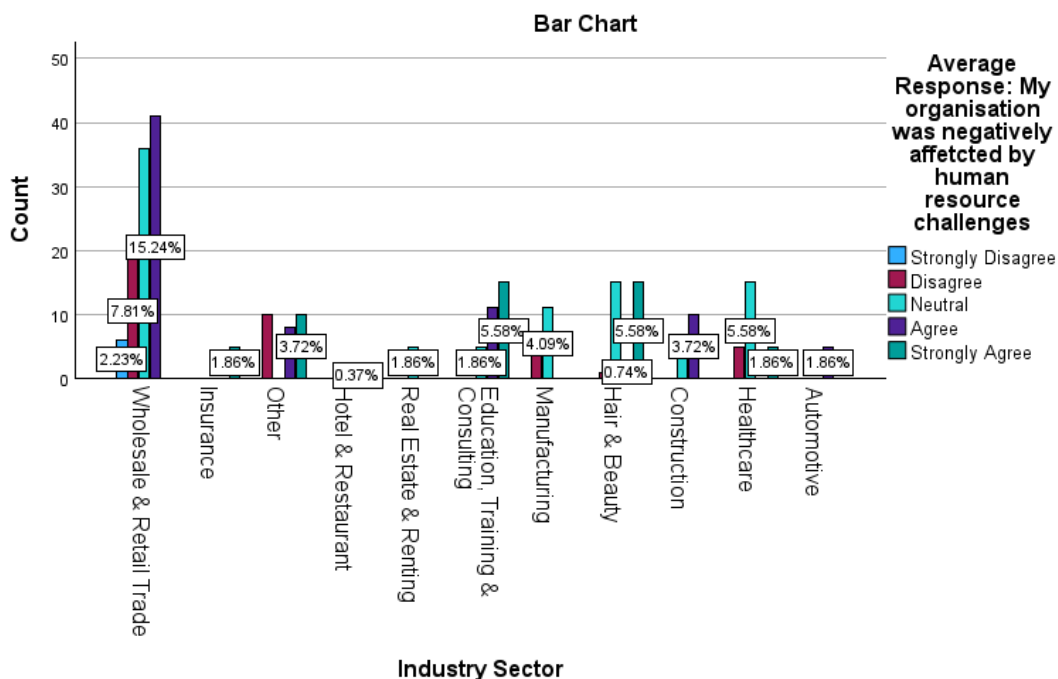


Figure 13. Sectoral association with human resource challenges

Overall, COVID-19 restrictions on human movement, requirements for social distancing, and actual cases of sickness and quarantine certainly amplified the human resources challenges faced by SMMEs in Botswana.

3.2.5 Additional challenges (thematic analysis)

Table 4. Additional Challenge(s) Encountered During COVID-19.

Theme	Code	Description
Supply Chain Issues	Increased Shipping Costs	Shipping goods from overseas became more expensive.
	Delays in Importing Components	Imported components faced significant delays.
	Delayed Supplier Deliveries	Suppliers took longer to deliver goods, slowing down the organization's operations.
Financial Challenges	Financial Issues (Rental and Salary Arrears)	Organizations struggled with paying rent and salaries on time.
	Cash Flow Problems	There was a lack of cash flow to support ongoing operations.
Demand and Business Impact	Lockdowns and Reduced Demand	Lockdowns led to reduced demand and shifted priorities, creating uncertainty.
	Budget Reallocations	Customer budget reallocations diverted resources away from important projects.
	Loss of Business	Organizations lost business due to changing customer priorities and budget cuts.
Workforce Challenges	Loss of Employees	Employees left for more stable jobs as the industry faced project shortages.
	Lack of Projects	There were fewer projects available, causing instability in employment.
Operational Strain	Increased Workload	The need for lab testing and other operations increased, leading to a higher workload.
	Increased Lab Testing Demand	The demand for lab testing during COVID-19 surged, adding pressure to the organization.
No Additional Challenges	No Additional Challenges	Respondents did not identify any further challenges affecting their organization.

Additional challenges identified were supply chain and logistics issues, demand and operational strain. Shipping goods from overseas became more expensive and this negatively affected SMMEs such as the wholesale & retail trade sector and others which heavily depend on imported goods. Imported components and goods faced significant delays as suppliers took longer to deliver goods thus slowing down the organization's operations.

Lockdowns during COVID-19 led to reduced demand and shifted priorities, creating uncertainty. Customer budget reallocations diverted resources away from important projects in sectors such as construction leading to loss of business.

Other respondents in the health sector such as testing laboratories reported increased volume of business which led to a corresponding increase in workload, sometimes requiring the hiring of additional staff. This was due to the mandatory testing for COVID-19 especially for those travelling across national borders.

4. Conclusion

The research set out to collect data about the challenges that SMMEs operating in Botswana faced during the recent and ongoing COVID-19 pandemic. It recruited 377 SMMEs in Gaborone, Francistown, and surrounding areas but obtained usable responses from 269 entities which represents a response rate of 71.4%. The data was analysed using SPSS software (version 24), and manual coding and thematic analysis. Most SMMEs studied were micro enterprises in nature and belonged to the wholesale and retail trade sector. Operationally, these entities had been in existence for more than 10 years for the most part implying that some micro enterprises in Botswana are quite resilient. The study established that SMMEs in Botswana encountered all the eight categories of challenges investigated namely financial, operational, market and demand, regulatory and compliance, human resource, technological, strategic, and communication related challenges. The key challenges were found to be financial (75.4%), technological (74.4%), and human resource (68.8%) challenges. Specifically, these were drop in sales/business (89.2%), need for accelerated digitisation (45.8%), and capacity to ensure the well-being of employees (58.4%). Additional challenges were also found relating to access and utilisation of government funding programmes and policies and frameworks put in place to support businesses during the pandemic. This is despite the seemingly high level of awareness among SMMEs. The challenges were found to be generally significantly associated with SMME industry sector. The observed trends showed that the Wholesale & Retail Trade and the Education, Training & Consulting sectors were at the top of the most affected entities. While the trend could be attributed to other underlying factors, it may reflect the proportionate sectoral representation as an underlying base factor. Challenge-specific factors may include, but not limited to,

differential access to information, finance, and the prevailing operating environment. The identification and elucidation of these challenges may be instrumental in formulating resilience strategies for SMME survival in varied contexts during crisis times, regardless of the type or nature of the crisis. The current study may be used as a base for further studies as suggested below:

a. Longitudinal studies on the nature and extent of challenges that continue to plague SMMEs in Botswana and elsewhere in view of the new normal in which COVID-19 is consistently present or in which new or similar infections are emerging. The studies should try to improve on representation for SMMEs in remote areas.

b. Post-COVID-19 research focused on identifying valuable lessons learned by different SMME sectors during the pandemic and how these can be harnessed to improve SMME resilience.

c. In-depth studies to review all the reasons advanced for non-access and non-utilisation of government interventions provided to SMMEs in Botswana during COVID-19 to identify the root cause to improve access, uptake, and utilisation of these initiatives in the future.

Acknowledgements

The department of Library, Teaching, and Research (LTRE) at Botho University is hereby acknowledged for funding the publication of this article.

References

- Agresti, A. (2007). *An Introduction to Categorical Data Analysis* (2nd ed.). Wiley-Interscience.
- Alvarez, P., Judd, D., & Blackburn, P. H. (2024, July 18). President Joe Biden tests positive for Covid-19 at pivotal moment in reelection campaign. Retrieved July 18, 2024, from CNN: <https://edition.cnn.com/2024/07/17/politics/joe-biden-tests-positive-covid-19/index.html>
- Botswana Institute for Development Policy Analysis (BIDPA). (2022). *Botswana Economic Review 2022*. Gaborone: Botswana Institute of Development Policy Analysis (BIDPA). Retrieved July 19, 2024
- Citizen Entrepreneurial Development Agency (CEDA). (2023). *Supporting SMMEs for Economic Growth*. Gaborone: Government of Botswana. Retrieved July 19, 2024
- Creswell, J. W., & Creswell, J. D. (2017). *Research Design: Qualitative, Quantitative, and Mixed Methods Approaches*. Sage Publications.
- DUCHARME, J. (2024, January 12). We're In a Major COVID-19 Surge. It's Our New Normal. Retrieved July 11, 2024, from TIME: <https://time.com/6554340/covid-19-surge-2024/>
- Field, A. (2013). *Discovering Statistics Using IBM SPSS Statistics* (4th ed.). Sage Publications Ltd.
- Guo, H., Yang, Z., Huang, R., & Guo, A. (2020). The digitalization and public crisis responses of small and medium enterprises: Implications from a COVID-19 survey. *Frontiers of Business Research in China*, 14(19).
- Herbane, B. (2019). Rethinking Organizational Resilience and Strategic Renewal in SMEs. *Entrepreneurship & Regional Development*, 31(5-6), 476-495.
- Hossain, R. M., Akhter, F., & Sultana, M. M. (2022). SMEs in Covid-19 Crisis and Combating Strategies: A Systematic Literature Review (SLR) and A Case from Emerging Economy. *Operations Research Perspectives*, 9, 100222.
- Krejcie, R. V., & Morgan, D. W. (1970). Determining Sample Size for Research Activities. *Educational and Psychological Measurement*, 30(3), 607-610.
- Local Enterprise Authority (LEA). (2023). *Enhancing the Competitiveness of SMMEs in Botswana*. Gaborone: Government of Botswana. Retrieved July 19, 2024
- Miles, M. B., Huberman, A. M., & Saldana, J. (2014). *Qualitative Data Analysis: A Methods Sourcebook*. Sage Publications.
- Ministry of Investment, Trade and Industry. (2023). *Annual Report on SMMEs in Botswana*. Gaborone: Ministry of Investment, Trade and Industry. Retrieved July 18, 2024
- Pongtanalert, K., & Assarut, N. (2022). Entrepreneur Mindset, Social Capital and Adaptive Capacity for Tourism SME Resilience and Transformation during the COVID-19 Pandemic. *Sustainability*, 14(12675).
- Raosoft Inc. (2004). Raosoft. Retrieved December 30, 2022, from <http://www.raosoft.com/samplesize.html>
- Rubin, H. J., & Rubin, I. S. (2012). *Qualitative Interviewing: The Art of Hearing Data*. Sage Publications.
- Statistics Botswana. (2022). *Quarterly Multi-Topic Survey Report Q4, 2021*. Government of Botswana.

World Health Organization. (2020). Coronavirus disease (COVID-19) Pandemic. Retrieved July 13, 2024, from World Health Organization: <https://www.who.int/emergencies/diseases/novel-coronavirus-2019>